

What's New



We are currently in the process of developing Blade v2, and are planning to release this brand new software in 2024. We will shortly be asking for BETA testers. Please feel free to [contact us](#) if you wish to be included in our programme.

- [What's New in Blade v1.19](#)
- [Change Log](#)

What's New in Blade v1.19

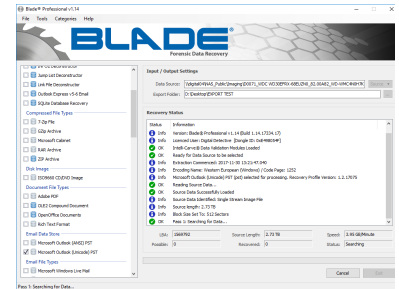
We are pleased to announce the release of Digital Detective's Blade® v1.19 which brings new features and improvements to our software. Here are some of the highlights:

- You can now read SHA256 and SHA512 hashes stored in Ex01/Lx01 images, which enhances the verification and integrity of your evidence.
- We have added support for more segments in Expert Witness and Smart images, which allows you to handle much larger disks and more data.
- We have fixed some issues with the display of hash comparison in different string formats.

[Download Blade®](#)

Change Log

To see the full change log for this version, please see: [Change Log v1.19](#).



- [What's New in Blade v1.18](#)
- [Change Log](#)

What's New in Blade v1.18

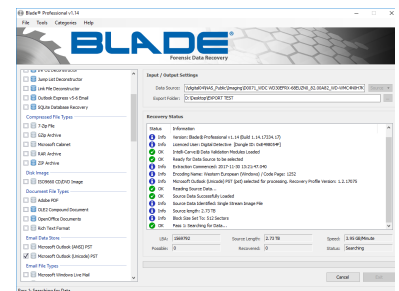
We are pleased to announce the release of Digital Detective's Blade® v1.18. This release improves our SQLite database recovery engine and resolves an issue recovering from some Recycle Bin entries.

We have added a new and improved version of the DataDump™ tool with this release. For the full change log, see the link below.

[Download Blade®](#)

Change Log

To see the full change log for this version, please see: [Change Log v1.18](#).



- [What's New in Blade v1.17](#)
- [Change Log](#)

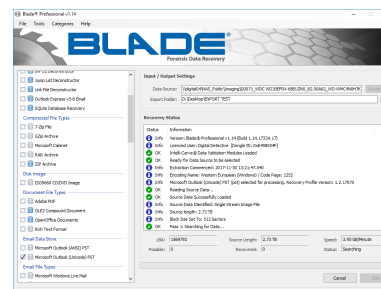
What's New in Blade v1.17

We are pleased to announce the release of Digital Detective's Blade® v1.17. This release resolves a `MissingMemberException` which could occur when recovering Windows link file objects and jump files.



Change Log

To see the full change log for this version, please see: [Change Log v1.17](#).



- [What's New in Blade v1.16](#)
- [Change Log](#)

What's New in Blade v1.16

We are pleased to announce the release of Digital Detective's Blade® v1.16. This release includes a fix for an `EndOfStreamException` that is sometimes encountered when trying to recover some corrupt JPEG images.



Change Log

To see the full change log for this version, please see: [Change Log v1.16](#).

