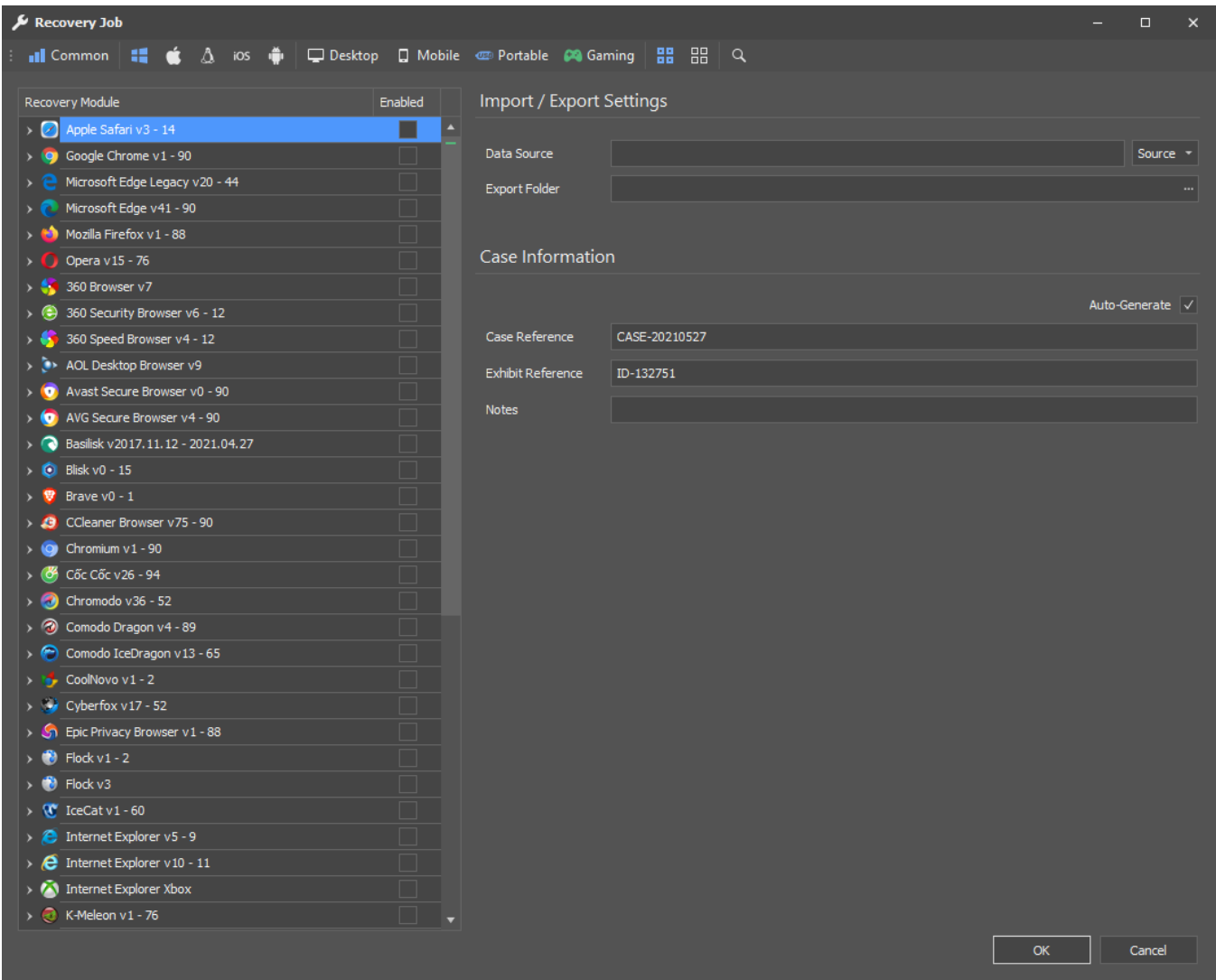
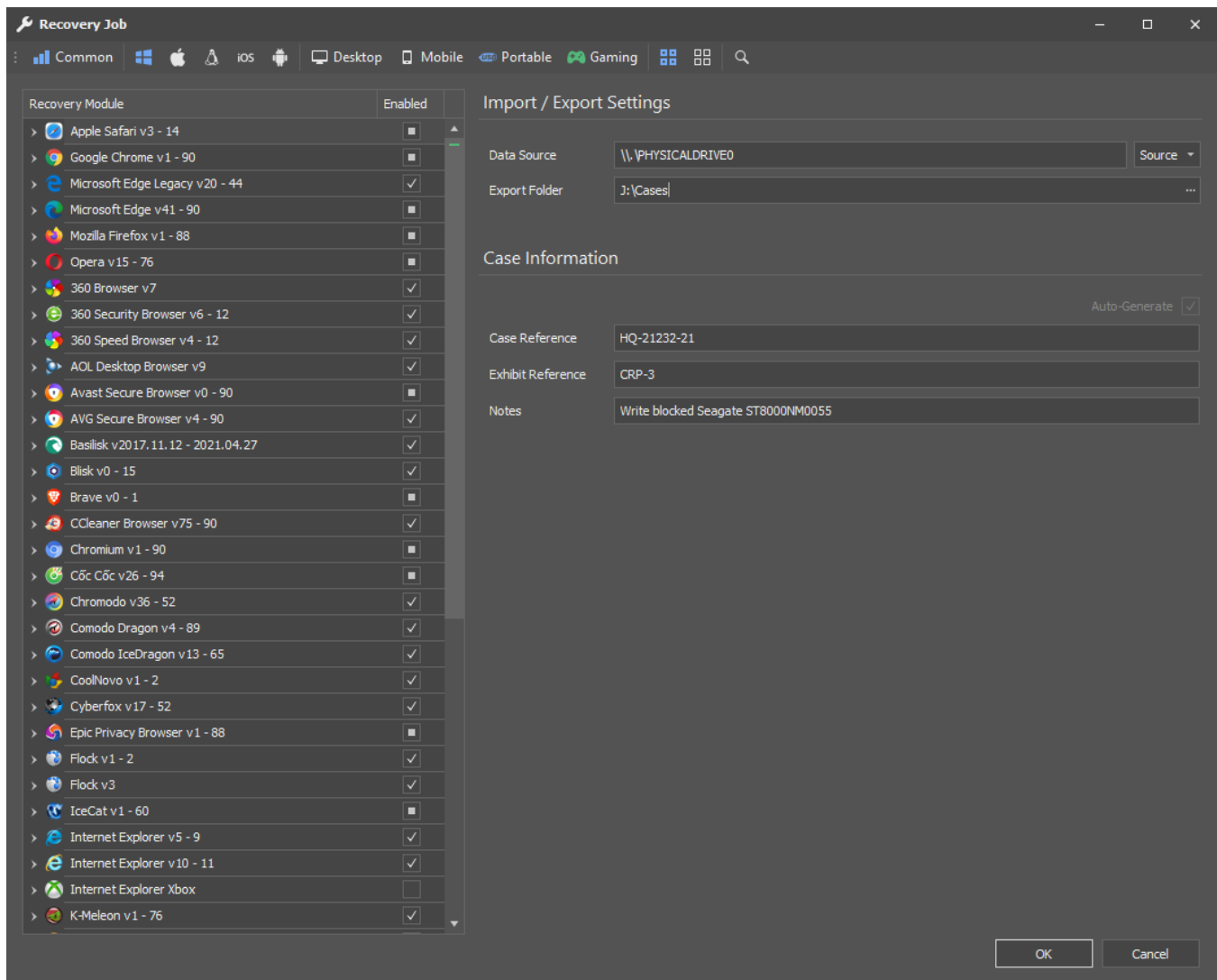


Recovery Job

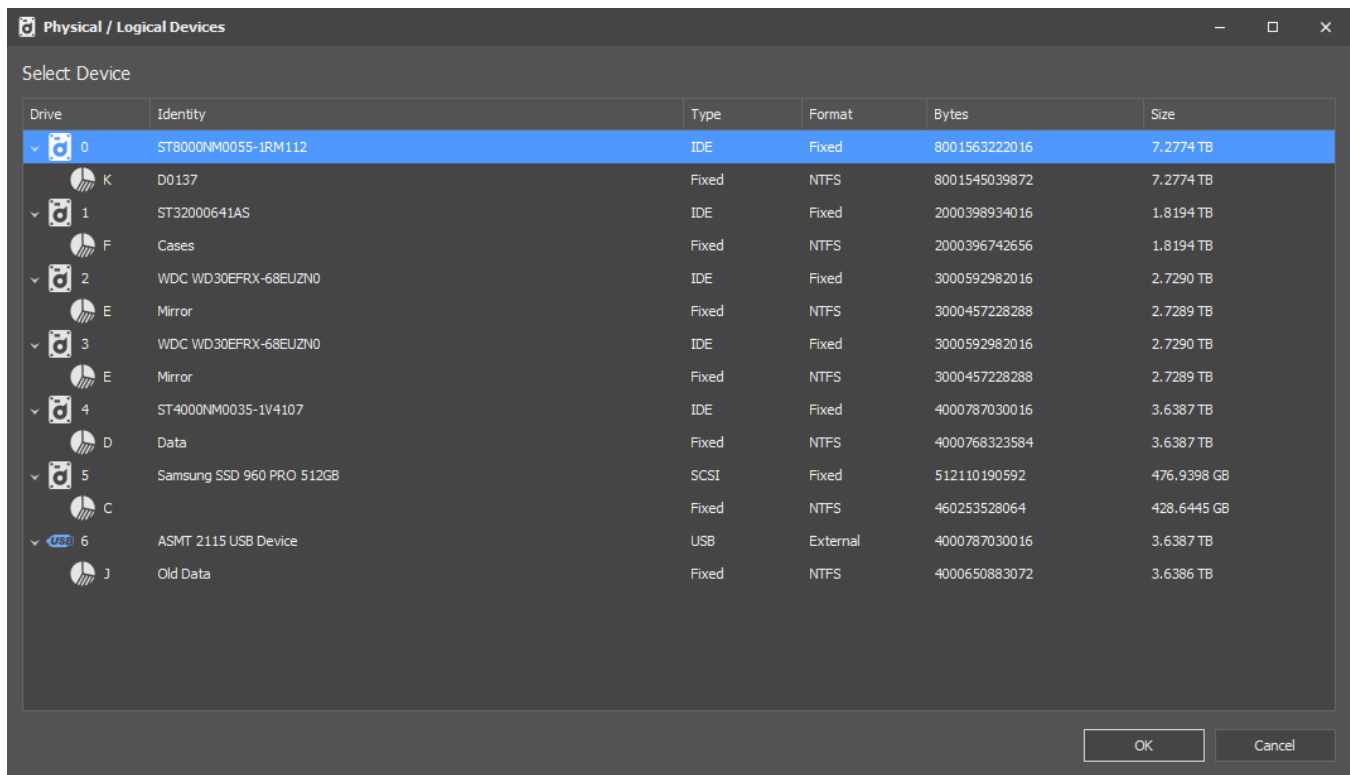
A recovery job contains all the parameters for recovering data against a single source. A powerful feature of HstEx® is the ability to select multiple recovery modules to run against a source, as well as being able to configure multiple-jobs to run against different sources.



The window above shows a new recovery job prior to configuration. The user can click to enable the recovery of data for a specific browser, or select the individual data types if required. Case information can also be saved for each recovery job. We have included buttons to allow the user to select the Common recovery modules, or the supported modules for a specific Operating System or device type.



The window above shows a configured recovery job. In this case, the user has selected to recover data from physical drive 0. When the user selects a physical/logical attached device, the following window is shown.



The window above shows a list of any logical/physical devices attached to the system, along with corresponding technical information relating to that device.