

HstEx® Evaluation Limitations

- [Introduction](#)
- [HstEx® Evaluation Limitations](#)
- [Verifying Evaluation Status](#)
- [Other Links](#)

Introduction

The evaluation versions of our software have some limitations when compared to the full versions. The evaluation version can be unlocked at any stage and converted to a full version with a valid licence. Our licence information is stored on a USB Licence Dongle which activates the software when it is launched and the dongle is present.



HstEx® Evaluation Limitations

The following features are limited or disabled in the evaluation software:

- The software cannot be used in any criminal or civil proceedings
- The evaluation period is 21 days. The software will expire after this period.
- The evaluation has been disabled for [virtual environments](#).
- Output file(s) contain metadata markers to show they were created with an evaluation version.

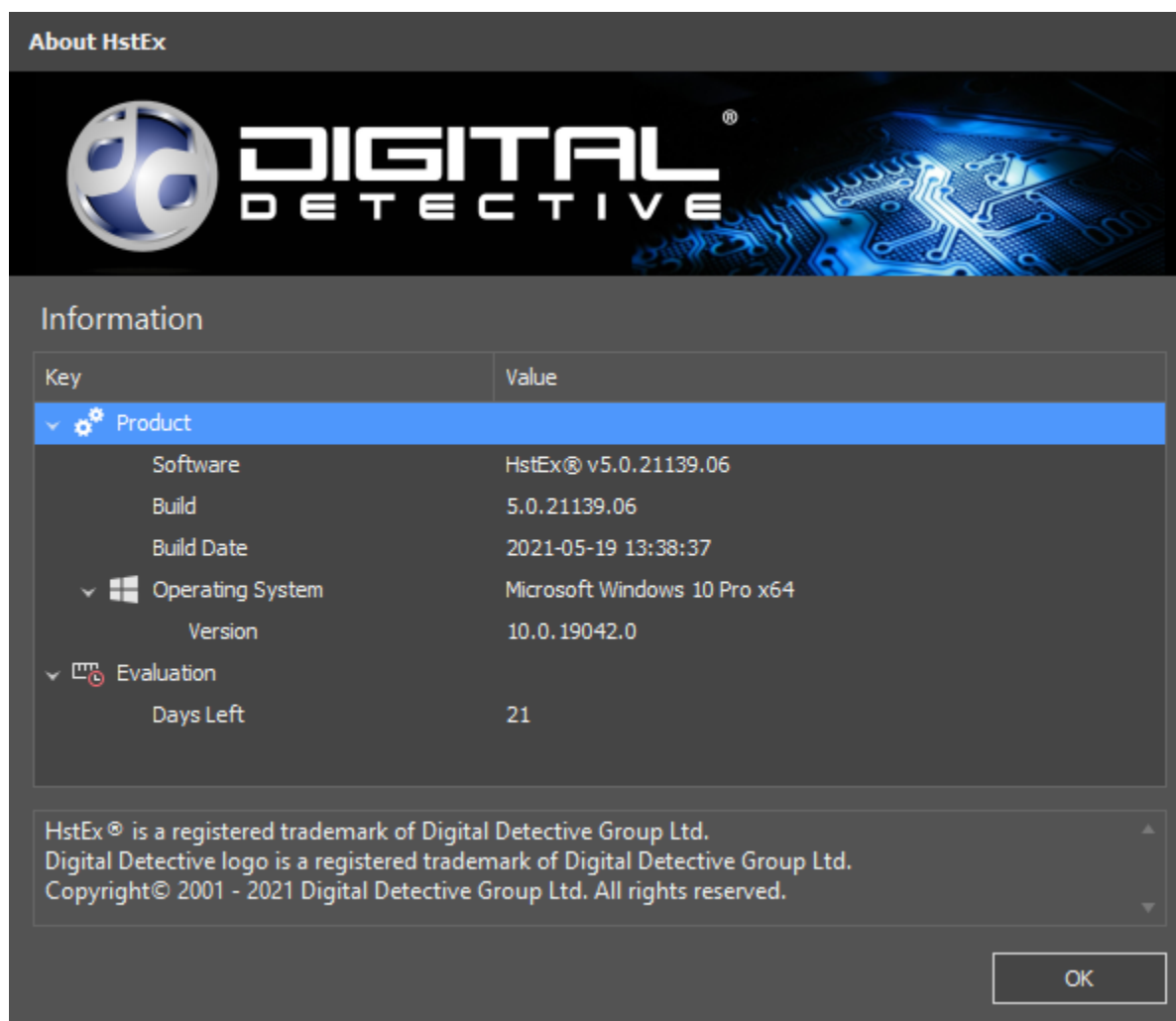


Warning

When using an evaluation version of our software, please ensure you adhere to our [End User Licence Agreement](#) with regards to using the software on live or current casework. An evaluation version (or academic version) cannot be used to produce evidence for any casework.

Verifying Evaluation Status

Launch HstEx® and select **Help » About HstEx®** from the menu. The About window will show how many days are left on the evaluation.



Other Links

- [NetAnalysis® Evaluation Version Limitations](#)
- [Blade® Evaluation Version Limitations](#)