

Installing a Licence Key File with v1.37

NetAnalysis uses a licence key file to activate the full functionality of the software. The licence key file is normally sent to the end user by email and is contained within a zip archive. The licence key file (netanalysis.lic) must be extracted from the zip archive and copied to the NetAnalysis installation folder. It must be in the same physical location as NetAnalysis.exe.

If you have multiple keys, do not unzip them to the NetAnalysis folder as that will result in sub-folders being created which will contain each licence key. You must copy the LIC file to the NetAnalysis main installation folder. This location will vary with different operating systems and different versions of NetAnalysis.

Information

This article relates to NetAnalysis v1.20 - 1.37 and HstEx v1-2. For NetAnalysis > v1.50 and HstEx v3, please use the Licence Key Management Tool. See article [Installing a Licence Key File](#).

Licence Key Locations

The default installation folder for NetAnalysis is shown below.

Windows 2K, XP, Vista and Windows 7 (32 Bit)
C:\Program Files\NetAnalysis\

Windows XP, Vista and Windows 7 (64 Bit)
C:\Program Files (x86)\NetAnalysis\

Please ensure that the LIC file is in the same physical location as shown in Figure 1.

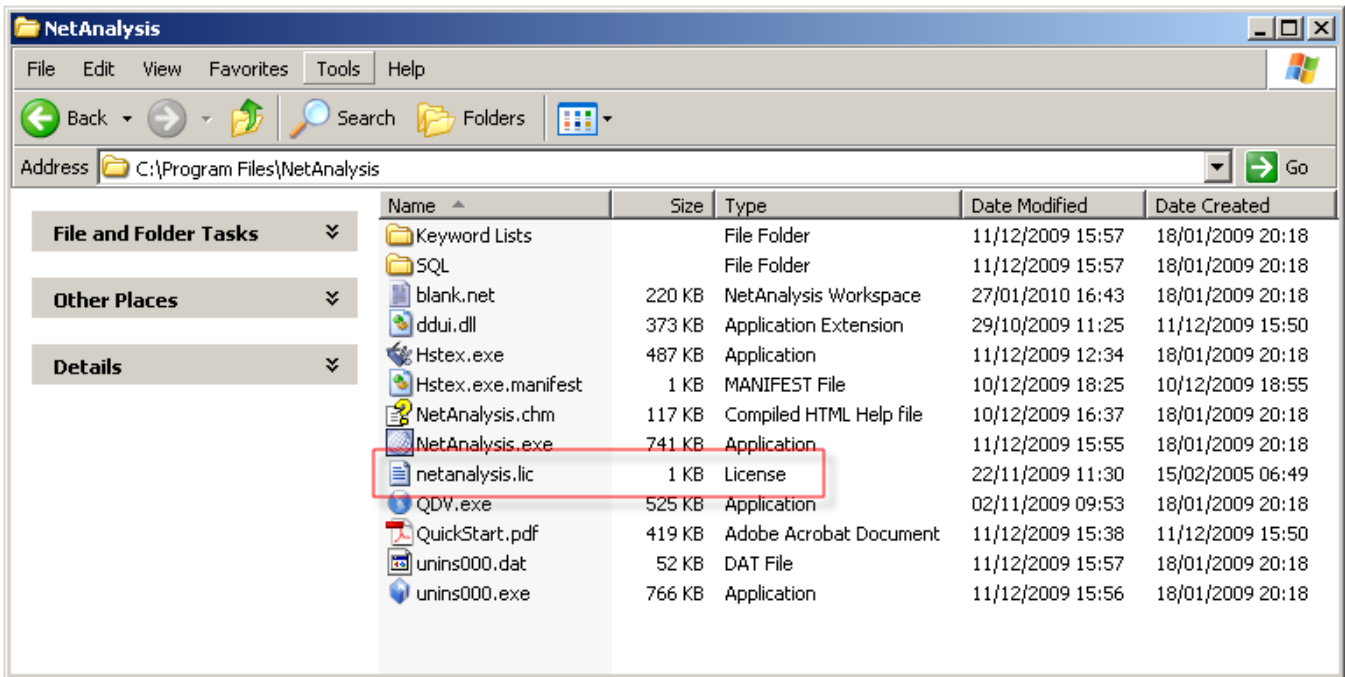


Figure 1

With the licence key in this location, run NetAnalysis and check the software is correctly activated by selecting About from the Help menu. You should see the Licenced User details and Licence ID as shown in Figure 2 below.



Figure 2