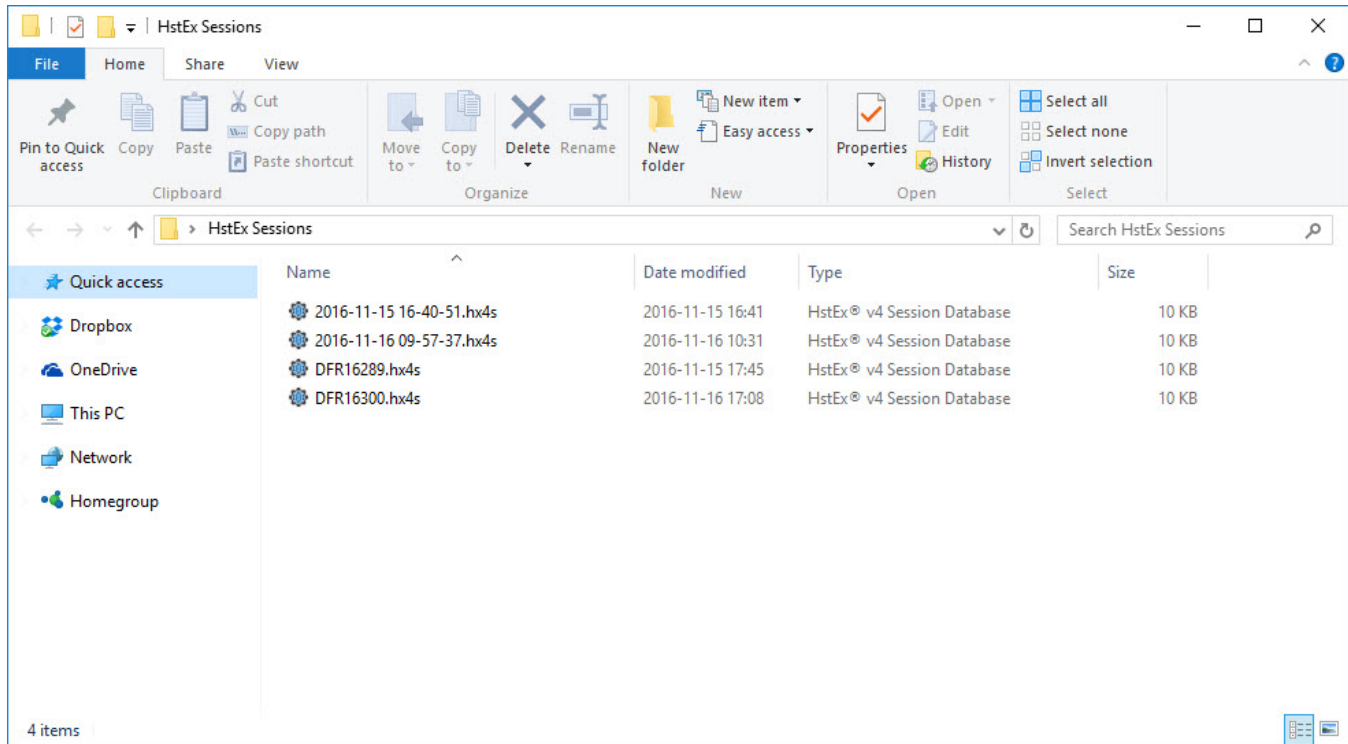


# File Extensions

- [HstEx® Session Database \(\\*.hx4s\)](#)
- [HstEx® Recovery File \(\\*.hstx\)](#)
- [Importing HstEx® Recovery Files](#)
- [Further Information](#)

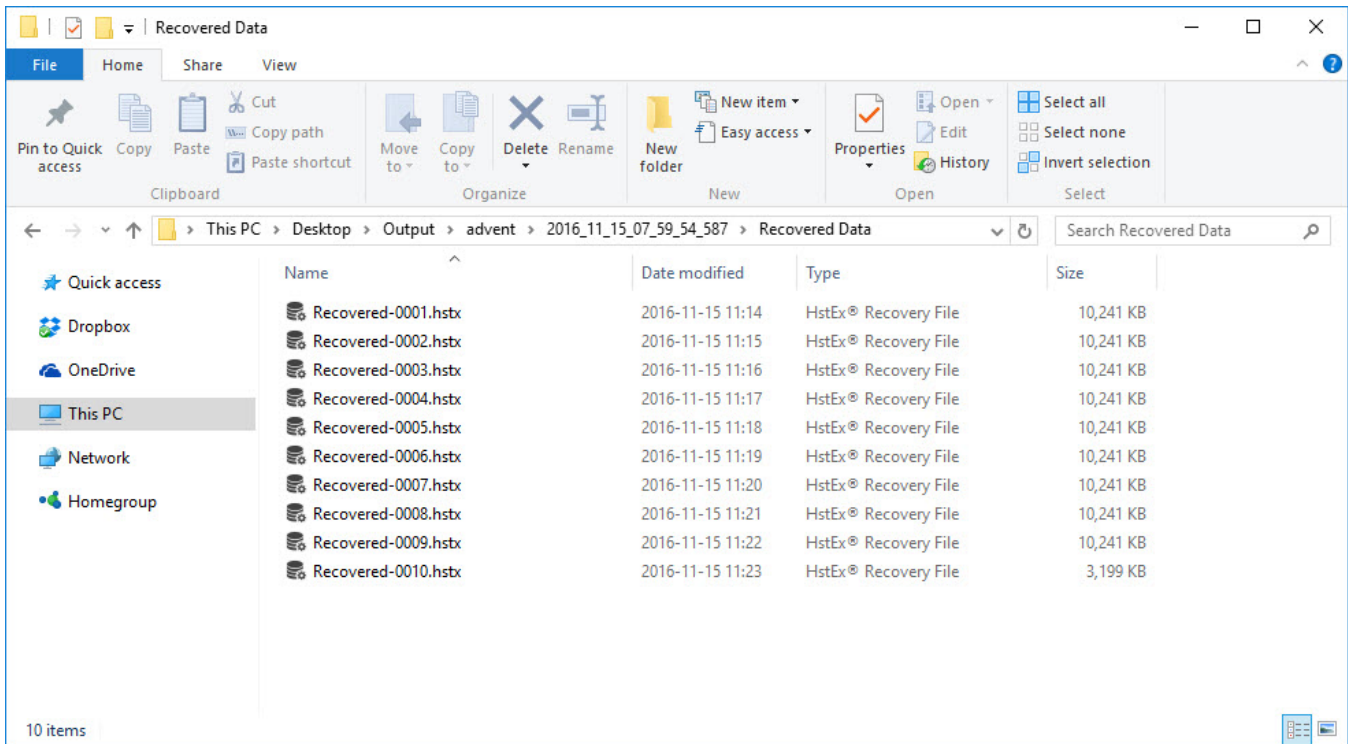
## HstEx® Session Database (\*.hx4s)

When you create and save a recovery session in HstEx®, a **session database file** is created with an **\*.hx4s** extension. As recovery jobs are added to the session, they will be saved to this database. At a later date, the session database can be re-opened in HstEx® and re-run if required. The session database will also remember the state of each job, so if a session is cancelled before it has been completed, HstEx® can continue processing each outstanding job. The image below shows a folder containing a number of session databases.



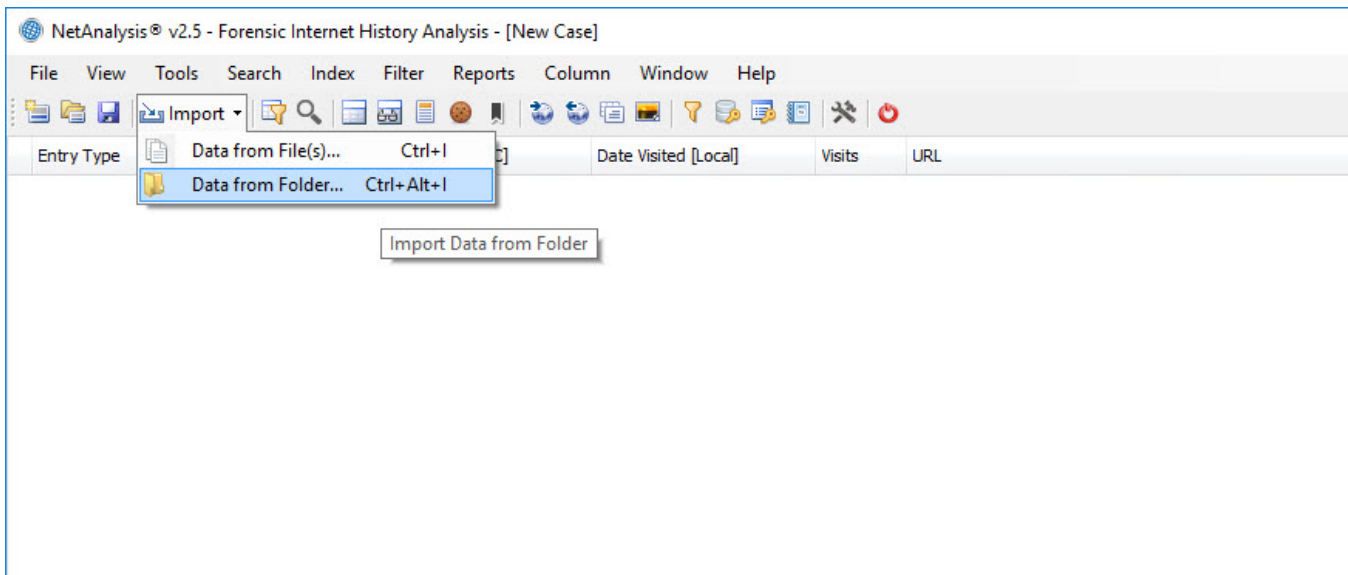
## HstEx® Recovery File (\*.hstx)

The HstEx® recovery file contains recovered data from a HstEx® recovery job. The file is in a proprietary encrypted binary format which can only be read by NetAnalysis®. The recovery files are written to the **export folder** for that job. The export folder is set when the recovery job is created in HstEx®. The image below shows an export folder containing multiple recovery files.



## Importing HstEx® Recovery Files

To import the recovered data from a HstEx® recovery session, start a new case in NetAnalysis® and select "Import » Data from Folder" from the toolbar drop down button. Select the folder containing the \*.hstx files. Selecting all of the files from "Import » Data from Files" works in exactly the same way (except you must select all \*.hstx files). You can also select Import from the File menu.



## Further Information

The following links will take you to the Quick Start Guides for NetAnalysis® and HstEx®.

- [HstEx® v4 Quick Start Guide](#)
- [NetAnalysis® v2 Quick Start Guide](#)