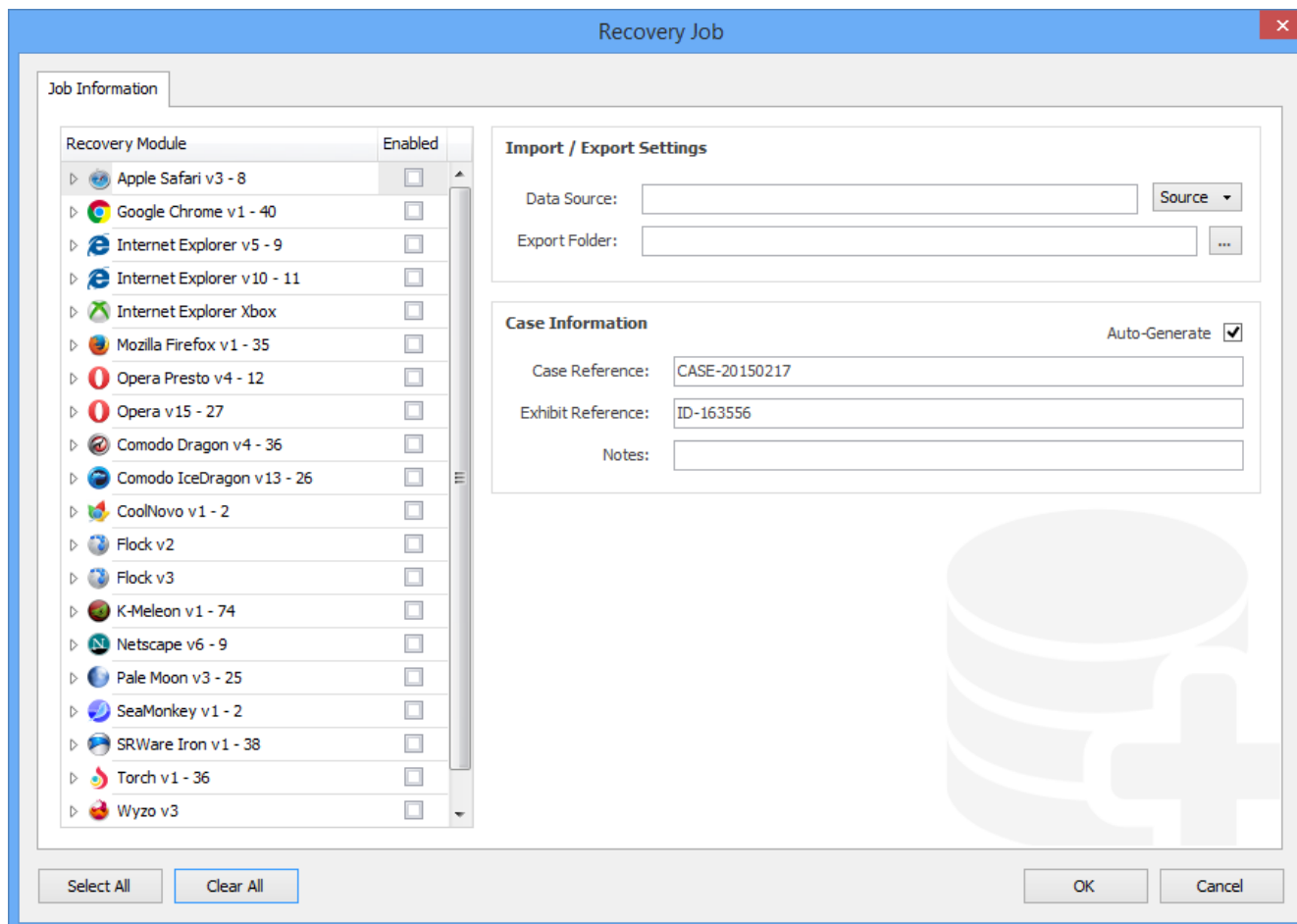
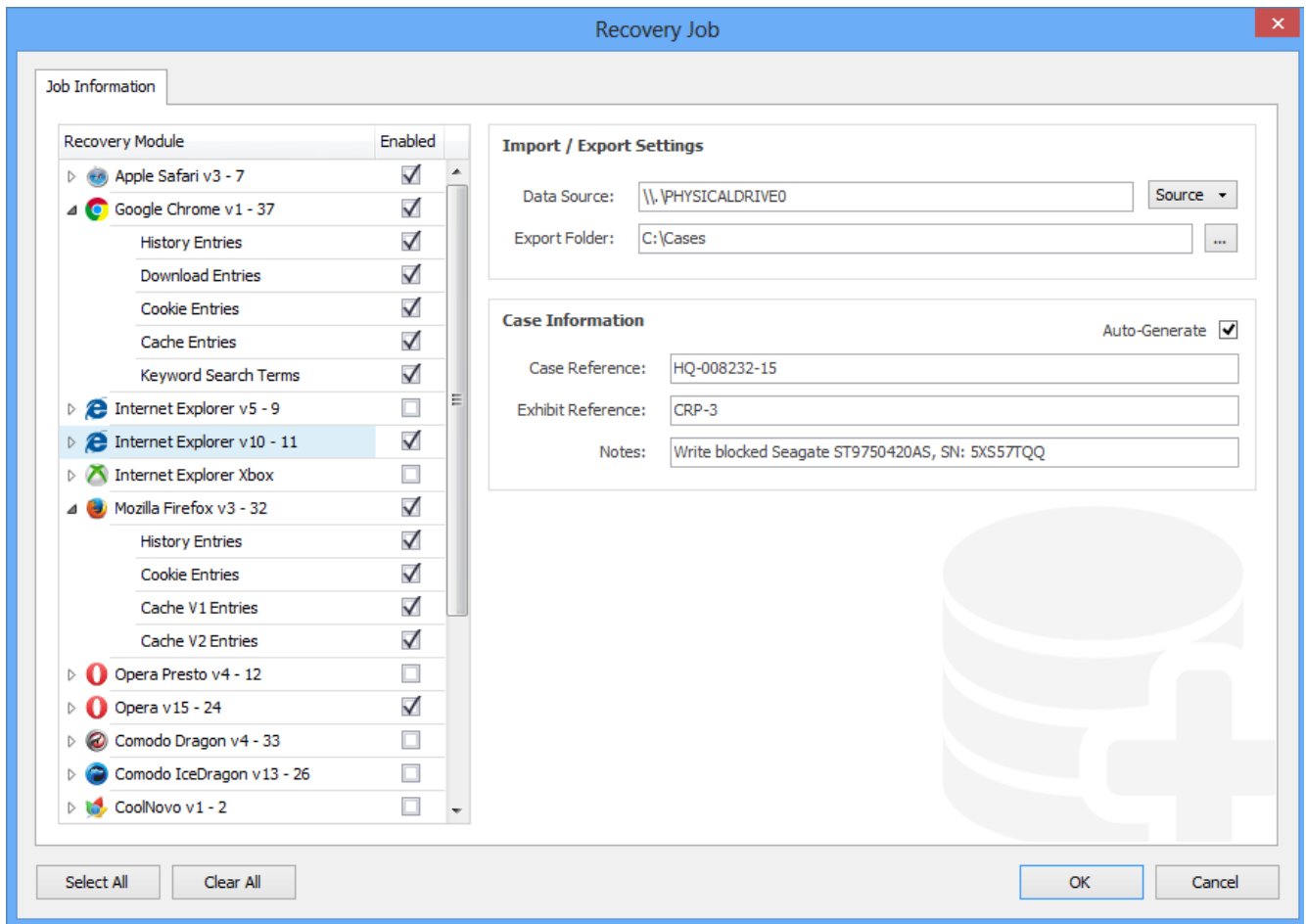


Recovery Job

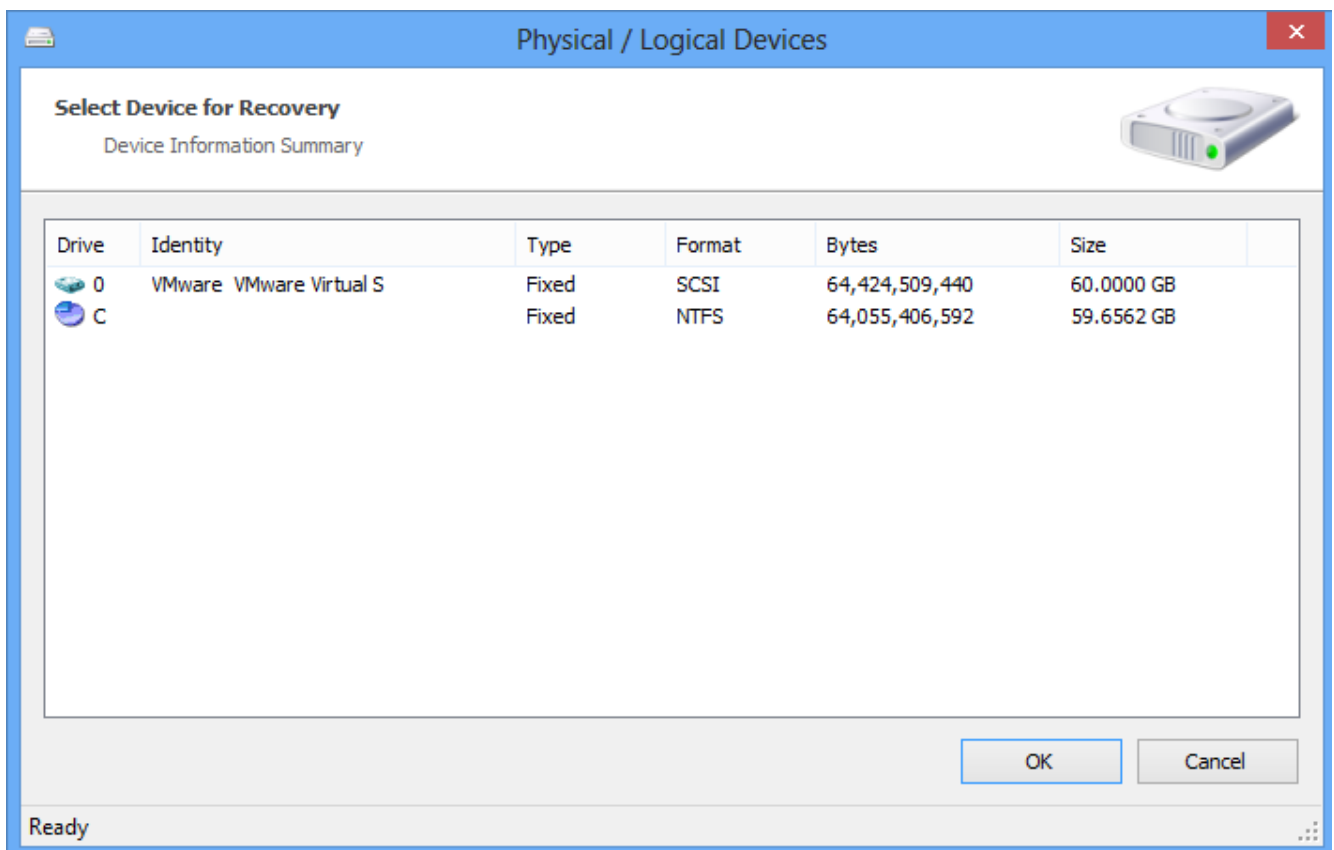
A recovery job contains all the parameters for recovering data against a single source. A powerful new feature for HstEx® v4 is the ability to select multiple recovery modules to run against a source.



The window above shows a new recovery job prior to configuration. The user can click to enable the recovery of data for a specific browser, or select the individual data types if required. Case information can also be saved for each recovery job.



The window above shows a configured recovery job. In this case, the user has selected to recover data from physical drive 0. When the user selects a physical/logical attached device, the following window is shown.



The window above shows a list of any logical/physical devices attached to the system, along with corresponding technical information relating

to that device.