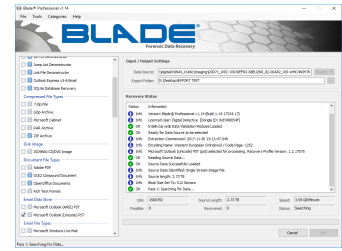


# Blade Professional v1



Blade® is a Windows-based, highly configurable, advanced, professional forensic data recovery solution designed to work at a logical level. It supports the raw recovery of data from file systems that are unknown, damaged or incomplete. Blade® supports all of the major forensic image formats and is more than just a data recovery tool. The professional modules have in-built Intelli-Carve® validation and interpretation routines to assist with accurate data recovery. Some of the standard profiles also have Intelli-Carve® validated routines (such as the JPEG, MPEG4, 3GP, ZIP and OLE2 Compound Document recovery modules).

Blade® has been designed to process a forensic image, physical/logical disk or binary dump at sector level using a process called data carving. This term is used for extracting structured data out of raw data based on the format specific characteristics present in the structured data. In digital forensics, it is the process of extracting data from a source without the assistance of the file system that created the original file.

The software has been designed for extremely fast/accurate forensic data recovery. Not only is it highly effective in the pre-analysis stage of a forensic examination, it can be quickly configured to recover bespoke data formats. It has specifically been written for the field of Digital Forensics.

In this section, you will find articles and tutorials to allow you to get the most out of our software.

## Blog Posts

Blade® v1.14 Released created by <a href="#">Craig Wilson</a>	Blade v1.x Nov 30, 2017
Blade® v1.13 Released created by <a href="#">Craig Wilson</a>	Blade v1.x Mar 23, 2016
Blade® v1.12 Released created by <a href="#">Craig Wilson</a>	Blade v1.x Mar 08, 2016
Blade® v1.11 Released created by <a href="#">Craig Wilson</a>	Blade v1.x Feb 02, 2015
Blade® v1.10 Released created by <a href="#">Craig Wilson</a>	Blade v1.x Jan 15, 2015

## Recently Updated

- [Change Log v1.9](#)  
May 29, 2020 • updated by [Craig Wilson](#) • [view change](#)
- [Change Log v1.13](#)  
May 29, 2020 • updated by [Craig Wilson](#) • [view change](#)
- [Change Log v1.15](#)  
May 29, 2020 • updated by [Craig Wilson](#) • [view change](#)
- [Change Log v1.16](#)  
Feb 26, 2020 • updated by [Craig Wilson](#) • [view change](#)
- [Blade v1.16](#)  
Feb 26, 2020 • updated by [Craig Wilson](#) • [view change](#)
- [Release Notes](#)  
Feb 26, 2020 • updated by [Craig Wilson](#) • [view change](#)
- [Exporting and Importing Blade Recovery Profiles](#)  
Jul 12, 2018 • updated by [Craig Wilson](#) • [view change](#)
- [Blade v1.15](#)  
Jul 10, 2018 • updated by [Craig Wilson](#) • [view change](#)
- [Blade Professional v1](#)  
Jun 29, 2018 • updated by [Craig Wilson](#) • [view change](#)

## Navigate Blade® Documentation



3gp aol apple binary blade blade-v1-1 blade-v1-11 blade-v1-12 blade-v1-14 blade-v1-15 blade-v1-16 blade-v1-17 blade-v1-2 blade-v1-5 blade-v1-9 blog carve carving **change-log** comparison compound-document compoundfile conversion data datadump dd deleted demo digital digits dotnet dr e-mail e01 email eml encase evaluation export express expression **faq** fdr featured forensic forensic-image group guide hash help image import installation intelli-carve jpeg kb-blog **kb80005** kb80056 kb80081 kb80109 linkfile lnk memory message message s microsoft msoe news notes ntfs ole2 os personal personal-filing-cabinet inet pfc processing profile range **recovery** regex regular-expression release **release-notes** safari segment sha-1 sha-256 share signature solution start support system techfeature **technical** tutorial tutorials unallocated user windows