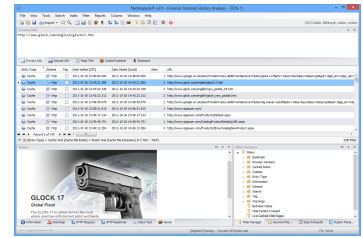


NetAnalysis v2 Documentation



Through a significant investment in research and development, we have authored a completely new ground-breaking product, engineered through innovation and fresh thinking. NetAnalysis® v2 is a state-of-the-art application for the extraction, analysis and presentation of forensic evidence relating to Internet browser and user activity on computer systems and mobile devices. It is a software product that offers significant improvements over existing applications and methodologies.

→ What's New in v2

Download Now

If you are a customer with a current licence, please use the links you were provided with when you purchased your licence. For security reasons, we do not provide links to software downloads on our website. If you have not got the link, please contact sales or click the button above.

NetAnalysis® User Guide

DOWNLOAD PDF

Search this Documentation

Featured Pages

- Entry Type
- Improved Web Page Rebuilding
- Indexing and Searching
- New Artefacts in v2.10
- New Artefacts in v2.11
- New Artefacts in v2.12
- New Artefacts in v2.4
- New Artefacts in v2.5
- New Artefacts in v2.6
- New Artefacts in v2.7
- New Artefacts in v2.8
- New Artefacts in v2.9
- New Cookie Examiner
- URL Analysis

Recently Updated Pages

- Tutorials
Aug 05, 2020 • updated by Craig Wilson • view change
- How to Format the Date and Time in a Report
Aug 05, 2020 • updated by Craig Wilson • view change
- Change Log v2.12
Jun 18, 2020 • updated by Craig Wilson • view change
- New Artefacts in v2.12
Jun 15, 2020 • updated by Craig Wilson • view change
- New Browser Support
Jun 12, 2020 • updated by Craig Wilson • view change

__utma __utmc __utmli __utmv __utm__utmxx _ga access-denied adapt analysis analy
tic-cookies base32 base58 browser **change-log** chart comma-separated configu
re cookie dataset date decode decoding demo desktop dongle e01 edge ei-paramet
er encoding encryption evaluation ex01 export favicon **featured** firefox g
oogle graphs guid help historyquickprovider information introduction kb-troubles
hooting-article keyword layout microsoft mount mozilla netanalysis-v2-0 neta

netanalysis-v2-1 netanalysis-v2-10 netanalysis-v2-11 netanalysis-v2-12 netanalysis-v2-2 netanalysis-v2-3 netanalysis-v2-4 netanalysis-v2-5 netanalysis-v2-6 netanalysis-v2-7 netanalysis-v2-8 netanalysis-v2-9 netanalysisv2 options overview page-previews page-rebuilding permissions problem-solving **release-notes** report report-editor reporting requirements rot13 rot18 script search security session-restore solution solutions sqlite stash support supported tab-separated technical time tsv **tutorial** tutorials ui url versions virtual volume warning web-browsers