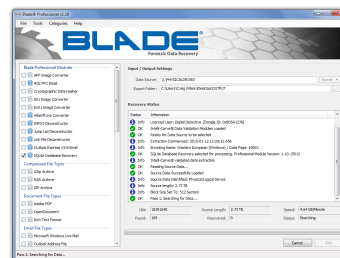


# Blade v1.12

- Introduction
- OLE2 Compound Document Recovery
- ZIP Archive Recovery
- DataDump
- Windows Jump Lists
- Change Log



## Introduction

This version of Blade adds Intelli-Carve® support for the recovery of Zip Archive based files and OLE2 compound based files. It includes a stand-alone version of our DataDumper tool for extracting data sub-sets and an updated Jump List deconstructor.

For a list of the changes made in this version, please see [Change Log v1.12](#).

## OLE2 Compound Document Recovery

Microsoft **Compound File Binary** (CFB) file format is also known as the Object Linking and Embedding (OLE) or Component Object Model (COM) structured storage compound file implementation binary file format. CFB implements a simplified file system through a hierarchical collection of storage objects and stream objects.

A storage object is comparable to a file system directory in that just as a directory can contain other directories and files, a storage object can contain other storage objects and stream objects. A parent storage object can also track the locations and sizes of the child storage object and stream objects nested beneath it. A stream object is comparable to a file in that a stream contains user-defined data stored as a consecutive sequence of bytes. A compound file consists of the root storage object with optional child storage objects and stream objects in a nested hierarchy.

The file format has been used for a number of different file formats such as:

- Microsoft Word up to 2003
- Microsoft Powerpoint up to 2003
- Microsoft Excel up to 2003
- Windows Thumbnail files
- Windows Installer files
- Windows Sticky Notes files
- Windows Jump Lists
- Internet Explorer Tab Session and Recovery Store files

Blade® now has the ability to validate Compound Files in memory, as well as identify the file type from the stream data.

## ZIP Archive Recovery

ZIP is one of the most widely used compressed file formats. It is universally used to aggregate, compress, and encrypt files into a single interoperable container. We have developed a methodology for recovery which has been embedded into an Intelli-Carve® recovery profile. Our software has the ability to read and validate ZIP archives directly from a stream.

In addition to being used as a compression file format, ZIP is also used in a number of proprietary file formats such as those used for the following file types:

- Microsoft Word from 2007
- Microsoft Powerpoint from 2007
- Microsoft Excel from 2007
- OpenOffice Documents
- StarOffice Documents
- Adobe AIR installation packages

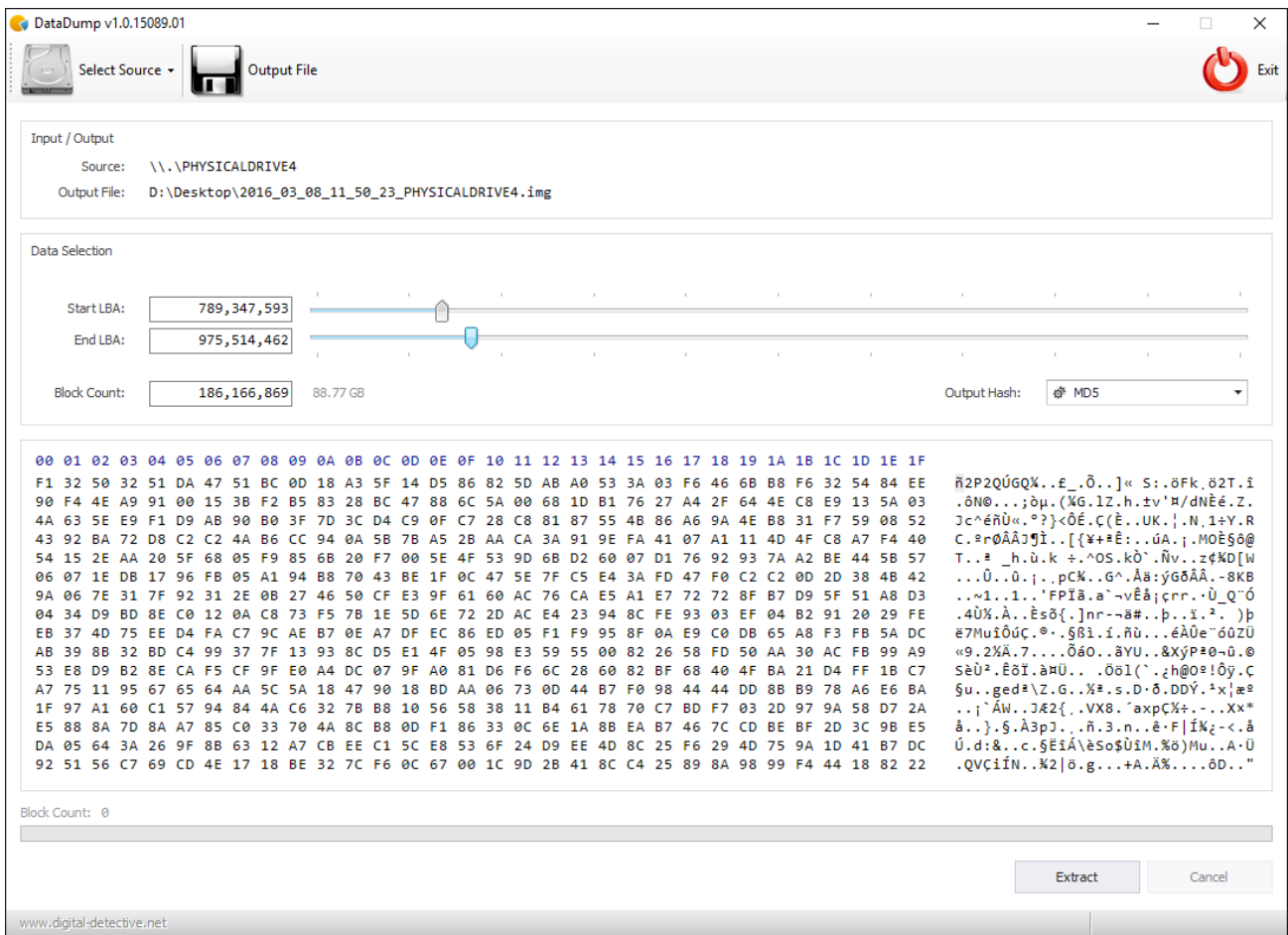
Blade® now has the ability to validate ZIP Archive files in memory, as well as identify the file type from the contents.

## DataDump

DataDump allows you to dump segments of data from an original source image or physical/logical device. It can be accessed from Blade® by selecting Tools » Dump Data. It can be used for the following:

- Extract a stream of binary data from a source image or logical device
- Convert an entire image or a segment of an image to a single flat file

- Extract binary chunks of data from files, images or physical/logical devices
- Extract a partition from a source device as a single binary file
- Hash the output data using MD5, SHA-1, SHA-256 or SHA-512



## Windows Jump Lists

The Jump List file format for Windows 10 has changed. Blade® has been updated to take this into account.

## Change Log

To examine the full change log for this version, please see: [Change Log v1.12.](#)